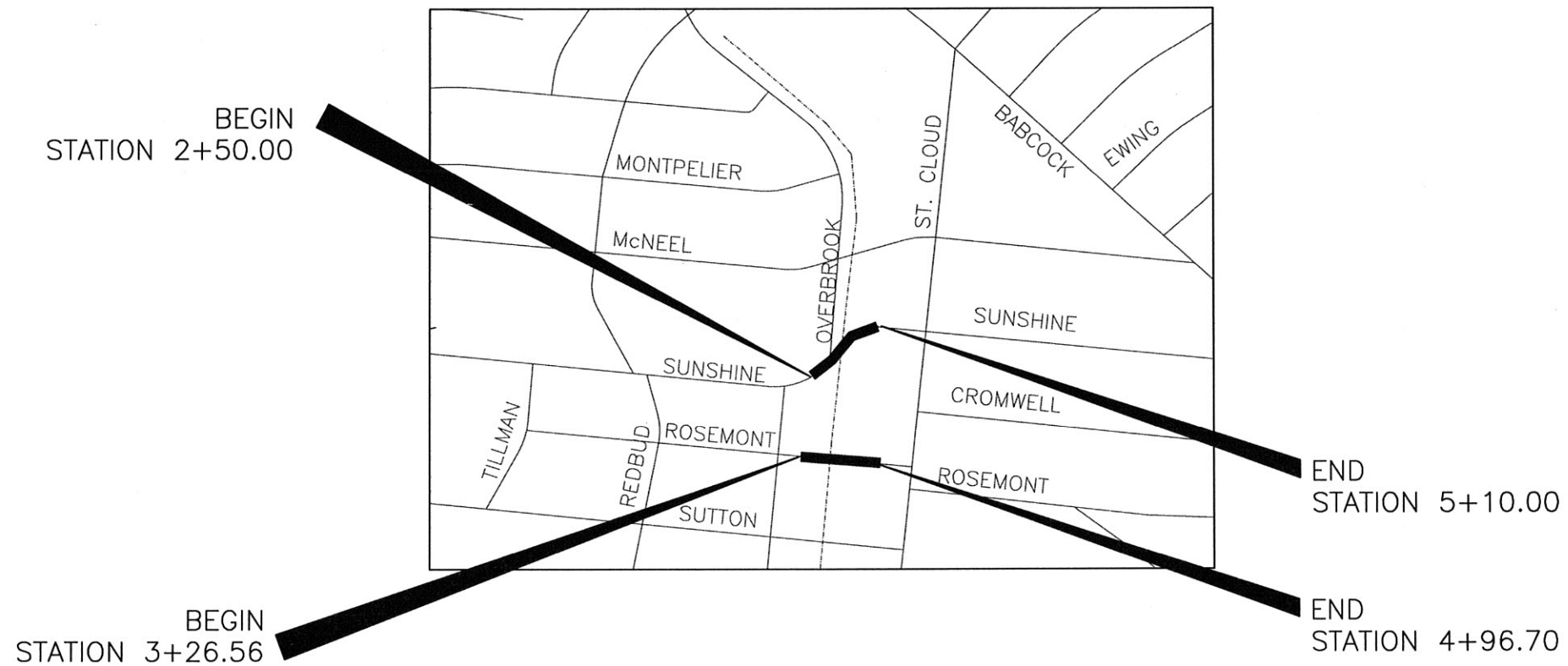


SAN ANTONIO WATER SYSTEM

JOB NO: 12-5093
UPPER WOODLAWN DRAINAGE
ST CLOUD OPTION 2
WATER PLANS



Abel R. Hinojosa
6/27/14

NOT TO SCALE

THIS DOCUMENT HAS BEEN PRODUCED FROM MATERIAL THAT WAS STORED, TRANSMITTED, ELECTRONICALLY AND MAY HAVE BEEN INADEQUATELY ALTERED. RELY ONLY ON FINAL HARD COPY MATERIALS BEARING THE CONSULTANT'S ORIGINAL SIGNATURE AND SEAL.

SHT NO.	DRAWING TITLE
1	TITLE SHEET
2	WATER NOTES & SHEET INDEX
3	OVERALL PROJECT LAYOUT SHEET
4	SUNSHINE WATER SHEET
5	ROSEMONT WATER SHEET
6	MISCELLANEOUS WATER DETAILS

GENERAL WATER NOTES

- ALL MATERIALS AND CONSTRUCTION PROCEDURES WITHIN THE SCOPE OF THIS CONTRACT SHALL BE APPROVED BY THE SAN ANTONIO WATER SYSTEM (SAWS) AND COMPLY WITH THE PLANS, SPECIFICATIONS, GENERAL CONDITIONS AND WITH THE FOLLOWING AS APPLICABLE:
 - CURRENT TEXAS COMMISSION ON ENVIRONMENTAL QUALITY (TCEQ) "DESIGN CRITERIA FOR DOMESTIC WASTEWATER SYSTEM", TEXAS ADMINISTRATIVE CODE (TAC) TITLE 30 PART 1 CHAPTER 217 AND "PUBLIC DRINKING WATER", TAC TITLE 30 PART 1 CHAPTER 290.
 - CURRENT TEXAS DEPARTMENT OF TRANSPORTATION (TXDOT) "STANDARD SPECIFICATIONS FOR CONSTRUCTION OF HIGHWAYS, STREETS AND DRAINAGE."
 - CURRENT SAN ANTONIO WATER SYSTEM "STANDARD SPECIFICATIONS FOR WATER AND SANITARY SEWER CONSTRUCTION."
 - CURRENT CITY OF SAN ANTONIO "STANDARD SPECIFICATIONS FOR PUBLIC WORKS CONSTRUCTION."
 - CURRENT CITY OF SAN ANTONIO "UTILITY EXCAVATION CRITERIA MANUAL."
- THE CONTRACTOR IS TO MAKE ARRANGEMENTS WITH THE SAWS CONSTRUCTION INSPECTION DIVISION AT 233-3500 AND PROVIDE NOTIFICATION PROCEDURES THE CONTRACTOR WILL USE TO NOTIFY AFFECTED HOME RESIDENTS AND/OR PROPERTY OWNERS 48 HOURS PRIOR TO EXCAVATION.
- LOCATIONS AND DEPTHS OF EXISTING UTILITIES AND SERVICE LATERALS SHOWN ON THE PLANS ARE UNDERSTOOD TO BE APPROXIMATE. ACTUAL LOCATIONS AND DEPTHS MUST BE FIELD VERIFIED BY THE CONTRACTOR 48 HOURS PRIOR TO CONSTRUCTION. IT SHALL BE THE CONTRACTOR'S RESPONSIBILITY TO LOCATE UTILITY SERVICE LINES AS REQUIRED FOR CONSTRUCTION AND TO PROTECT THEM DURING CONSTRUCTION AT NO COST TO SAWS.
- THE CONTRACTOR SHALL VERIFY THE EXACT LOCATION OF UNDERGROUND UTILITIES AND DRAINAGE STRUCTURES AT LEAST 48 HOURS PRIOR TO CONSTRUCTION WHETHER SHOWN ON PLANS OR NOT. THE FOLLOWING CONTACT INFORMATION ARE SUPPLIED FOR VERIFICATION PURPOSES:

SAWS UTILITY LOCATES: 233-2009
 SAWS PRODUCTION CONTROL CENTER: 233-2016
 COSA DRAINAGE: 207-8048
 COSA TRAFFIC SIGNAL OPERATIONS: 207-7720
 TEXAS STATE WIDE ONE CALL LOCATOR: 1-800-545-6005 OR 811

- THE CONTRACTOR SHALL COMPLY WITH CITY OF SAN ANTONIO OR OTHER GOVERNING MUNICIPALITY'S TREE ORDINANCES WHEN EXCAVATING NEAR TREES.
- THE CONTRACTOR SHALL NOT PLACE ANY WASTE MATERIALS OR SPOILS IN THE 100-YEAR FLOOD PLAIN WITHOUT FIRST OBTAINING AN APPROVED FLOOD PLAIN PERMIT.
- PRIOR TO TIE-INS, ANY SHUTDOWNS OF EXISTING MAINS OF ANY SIZE MUST BE COORDINATED WITH THE SAWS CONSTRUCTION INSPECTION DIVISION AT (210) 233-3500 AND/OR SAWS PRODUCTION GROUPS AT LEAST TWO WEEKS IN ADVANCE OF THE SHUTDOWN. THE CONTRACTOR MUST ALSO PROVIDE A SEQUENCE OF WORK AS RELATED TO THE TIE-INS; THIS IS AT NO ADDITIONAL COST TO SAWS OR THE PROJECT AND IT IS THE RESPONSIBILITY OF THE CONTRACTOR TO SEQUENCE THE WORK ACCORDINGLY.
- WHERE WATER LINES AND NEW SEWER LINES ARE INSTALLED WITH A SEPARATION DISTANCE CLOSER THAN NINE FEET (IE. WATER LINES CROSSING WASTEWATER LINES, WATER LINES PARALLELING WASTEWATER LINES, OR WATER LINES NEXT TO MANHOLES) THE INSTALLATION MUST MEET THE REQUIREMENTS OF 30 TAC 217.53(d) (PIPE DESIGN) AND 30 TAC 290.44(e) (WATER DISTRIBUTION).
- ASBESTOS CEMENT (AC) PIPE, ALSO KNOWN AS TRANSITE PIPE WHICH IS KNOWN TO CONTAIN ASBESTOS-CONTAINING MATERIAL (ACM), MAY BE LOCATED WITHIN THE PROJECT LIMITS. SPECIAL WASTE MANAGEMENT PROCEDURES AND HEALTH AND SAFETY REQUIREMENTS WILL BE APPLICABLE WHEN REMOVAL AND/OR DISTURBANCE OF THIS PIPE OCCURS, PAYMENT FOR SUCH WORK IS TO BE MADE UNDER SPECIAL SPECIFICATION ITEM FOR ASBESTOS CEMENT PIPE.
- ANY WORK COMPLETED WITHOUT PRIOR WRITTEN AUTHORIZATION WHICH IS NOT INCLUDED IN THESE PLANS AND SPECIFICATIONS WILL NOT BE COMPENSATED BY THE SAN ANTONIO WATER SYSTEM.
- SEE SAWS WEBSITE FOR DETAILS, WWW.SAWS.ORG

OVERALL BASE BID SUMMARY OF QUANTITIES			
ITEM	DESCRIPTION OF ITEM	UNIT	QTY
100.1	MOBILIZATION	LS	1
101.1	PREPARATION OF RIGHT OF WAY	LS	1
550	TRENCH EXCAVATION PROTECTION	L.F.	345
818	8" PVC WATERLINE	L.F.	65
818	12" PVC WATERLINE	L.F.	170
826	VALVE BOX ADJUSTMENT	EA	3
833.1	EXISTING METER AND METER BOX RELOCATION	EA	1
836	PIPE FITTINGS, ALL SIZES AND TYPES	TON	1.5
840	8" WATER TIE-INS	EA	2
840	12" WATER TIE-INS	EA	2
841	HYDROSTATIC TESTING	EA	2
844	2" BLOWOFF, TEMPORARY	EA	2
846	1" AIR RELEASE ASSEMBLIES	EA	1
856.2	8" CARRIER PIPE (PVC)	LF	55
856.2	12" CARRIER PIPE (PVC)	LF	55
856.3	CASING OR LINER 18" (OPEN CUT)	LF	55
856.3	CASING OR LINER 24" (OPEN CUT)	LF	55
858	CONCRETE ENCASEMENT	CY	2
1015	SERVICE LINE BREAKS / LEAK REPAIRS	EA	1
1020	WATER MAIN BREAKS / LEAK REPAIRS	EA	1

NOT TO SCALE

SA
INC
F-5226

San Antonio Design Group Inc.
CONSULTING ENGINEERS
12719 SPECTRUM DR, SUITE 100, SAN ANTONIO, TEXAS, 78213
PH:(210) 342-6700 FAX:(210) 342-6701 WWW.SADESIGNGROUP.COM

LEGEND	
PROP. WATER MAIN	---
EXIST. WATER MAIN	---6" C.I.W.---
GAS MAIN	---2"---
SANITARY SEWER	---8" SA---
STORM SEWER	---24" ST---
UTILITY POLE LINE	---O---
ELECTRIC CABLE	---E---
TELEPHONE CABLE	---T---
DUAL BRANCH SERV.	---
NEW UNMETERED SERVICE:	
3/4" SINGLE	
1" DUAL	
SERVICE RECONNECT:	
3/4"	
1" OR LARGER	
SERVICE RELAY:	
3/4"	
1" OR LARGER	
SERVICE RELOCATE:	
3/4"	
1" OR LARGER	
RELOCATE METER	▷
NEW SERVICE:	
3/4"	
1" OR LARGER	

No.	Revision	Drawn	Approved	Date

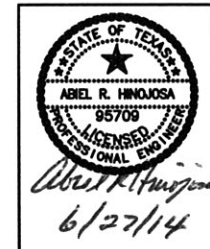
SA
INC

WATER NOTES

DEVELOPER: SAN ANTONIO WATER SYSTEM
 CONT. BUDGET PROJ.

SUBMITTED _____
 APPROVED _____

MAP No. _____ SHEET
 SECT. No. _____
 DR. ARH CK. RJA JOB No. 12-5093 2 OF 6



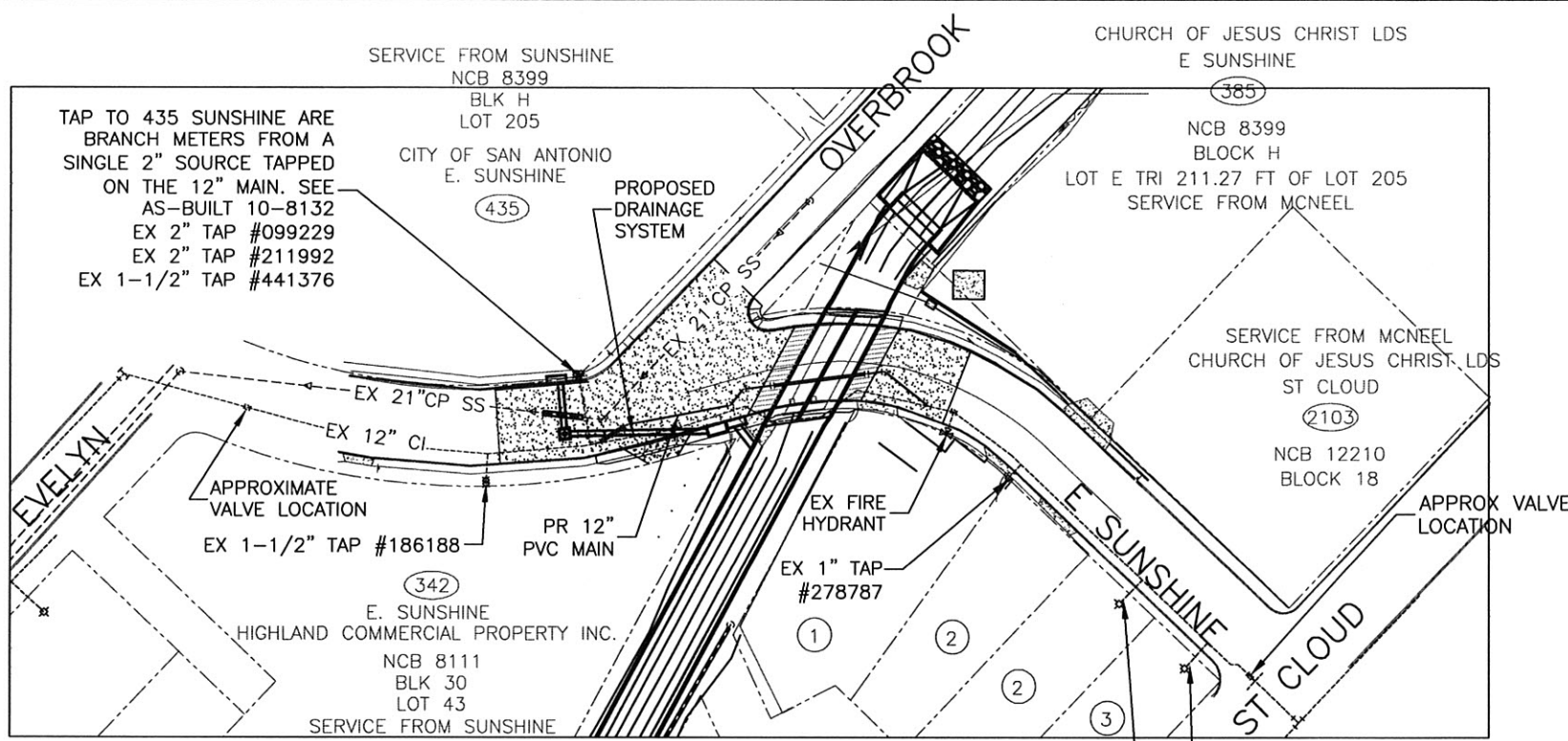
DATE: Jun 27, 2014 8:13AM USER: Anthony File: R:\PROJECTS\121714\Drawn_Drainage\DWG\SANS_R12-5093.dwg

LEGEND

- WATER OR GAS VALVE
- FIRE HYDRANT
- OH ELEC W/ POLE
- SANITARY SEWER/MANHOLE
- PROPERTY LINE
- WATER METER
- ADDRESS
- MILL AND OVERLAY
- STREET RECONSTRUCTION

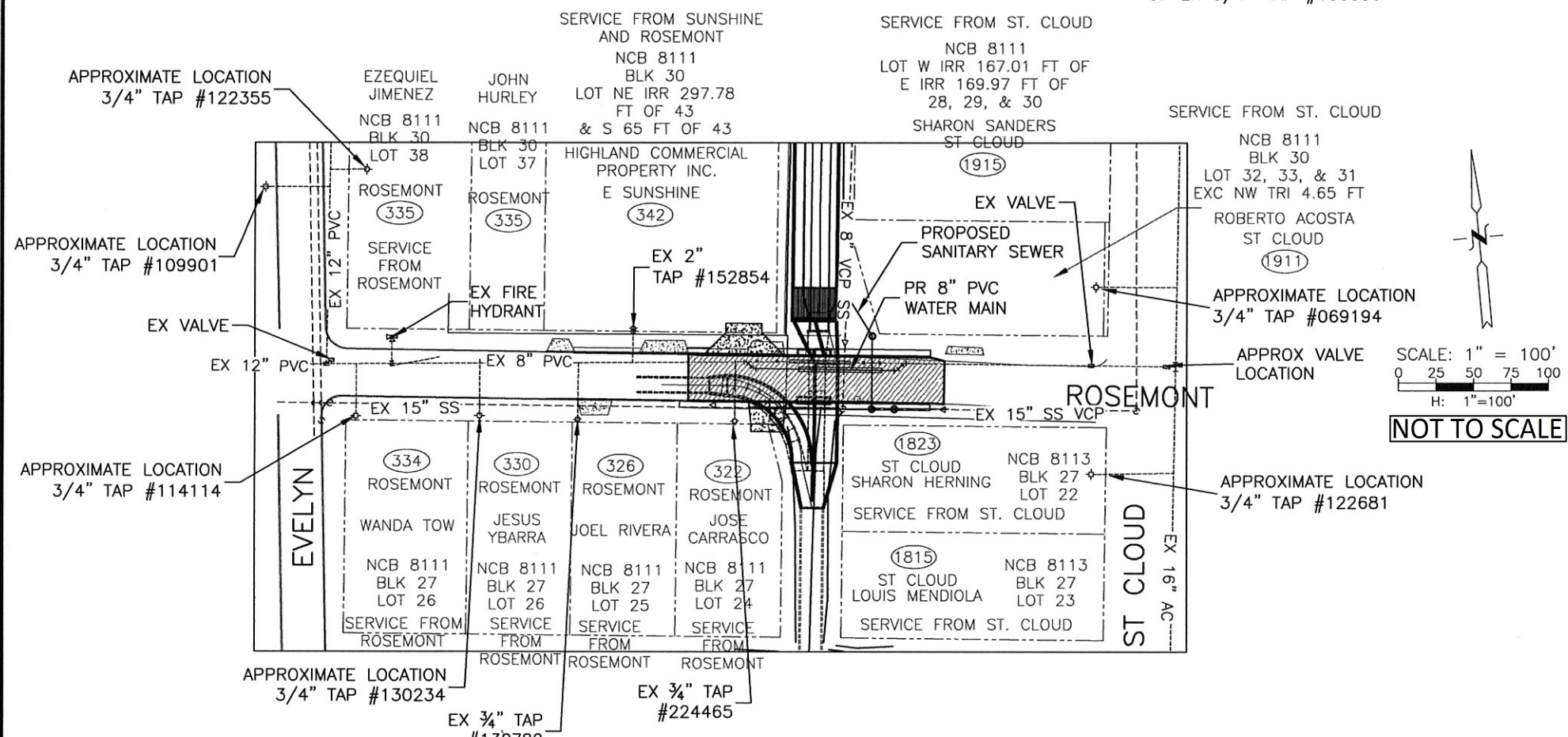
SCALE: 1" = 100'
0 25 50 75 100
H: 1"=100'

NOT TO SCALE



ADDITIVE ALTERNATE

APPROXIMATE LOCATION OF EX 3/4" TAP #089998
APPROXIMATE LOCATION OF EX 3/4" TAP #130356



BASE BID

OWNERSHIP LIST	
NO.	NAME/ADDRESS/LEGAL
①	330 E. SUNSHINE BECKNER INC. NCB 8111, BLK 30, LOT 12, 11 EXC NW TRI 5.2 FT & SE IRR PT OF 9 & 10
②	304 E. SUNSHINE CHURCH OF JESUS CHRIST LDS NCB 8111, BLK 30, LOTS 14, 15, 16, & 17
③	302E. SUNSHINE SANDRA JENNINGS NCB 8111, BLK 30, LOT 18 & W IRR 14.88 FT OF 19

SCALE: 1" = 100'
0 25 50 75 100
H: 1"=100'

NOT TO SCALE

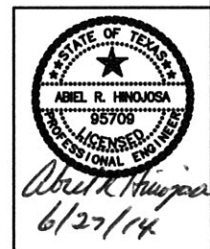
SA DG INC San Antonio Design Group Inc.
CONSULTING ENGINEERS
12719 SPECTRUM DR, SUITE 100, SAN ANTONIO, TEXAS, 78213
PH:(210) 342-6700 FAX:(210) 342-6701 WWW.SADESIGNGROUP.COM

LEGEND

- PROP. WATER MAIN
- EXIST. WATER MAIN
- GAS MAIN
- SANITARY SEWER
- STORM SEWER
- UTILITY POLE LINE
- ELECTRIC CABLE
- TELEPHONE CABLE
- DUAL BRANCH SERV.
- NEW UNMETERED SERVICE:
- 3/4" SINGLE
- 1" DUAL
- SERVICE RECONNECT:
- 3/4"
- 1" OR LARGER
- SERVICE RELAY:
- 3/4"
- 1" OR LARGER
- SERVICE RELOCATE:
- 3/4"
- 1" OR LARGER
- RELOCATE METER
- NEW SERVICE:
- 3/4"
- 1" OR LARGER

No.	Revision	Drawn	Approved	Date

REVISIONS	
OVERALL WATER LAYOUT	
DEVELOPER:	SAN ANTONIO WATER SYSTEM
CONT.:	BUDGET PROJ.
SUBMITTED	
APPROVED	
MAP No.	
SECT. No.	
DR. ARH	CK. RJA
JOB No.12-5093	SHEET 3 OF 6

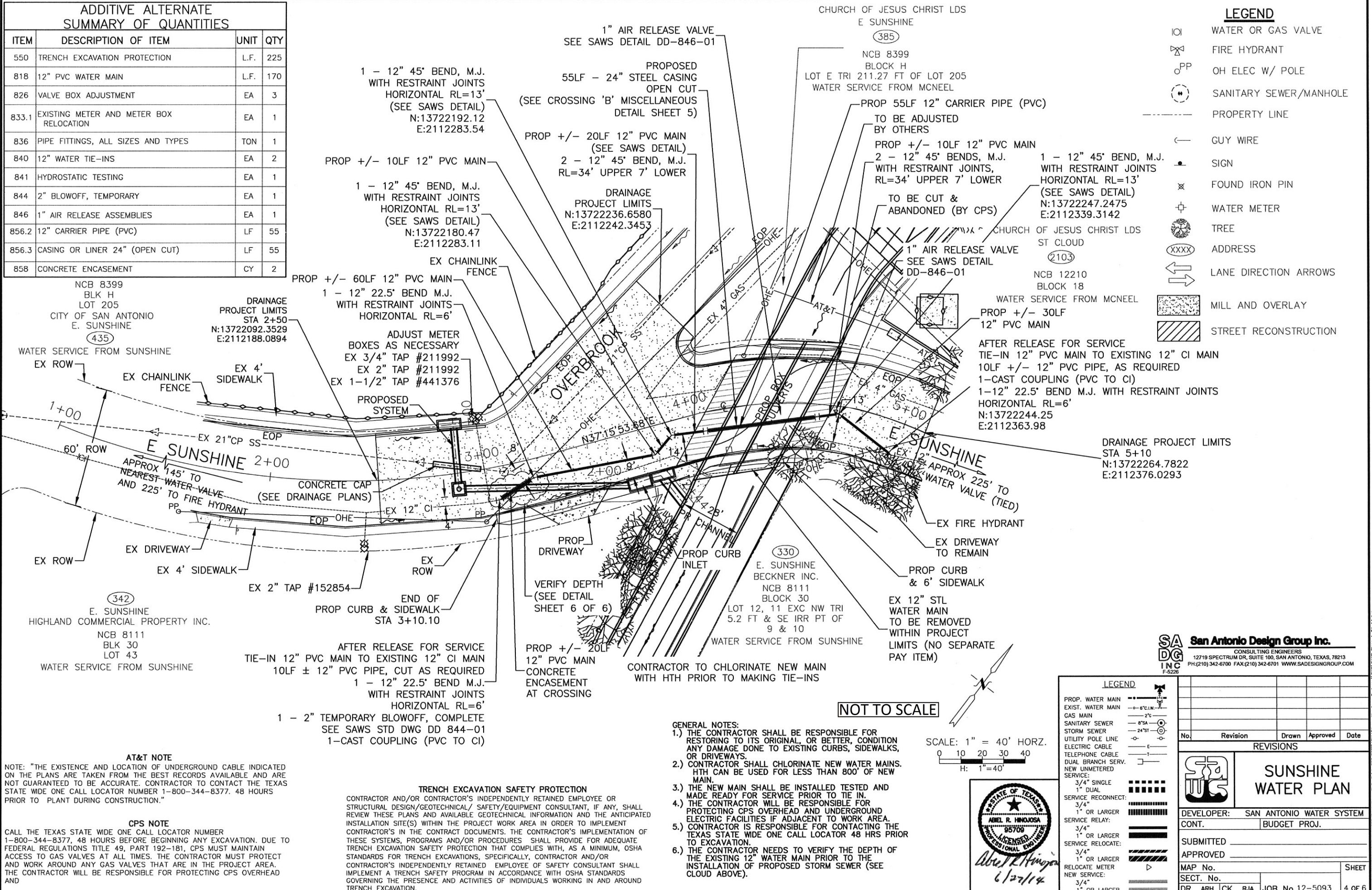


**ADDITIVE ALTERNATE
SUMMARY OF QUANTITIES**

ITEM	DESCRIPTION OF ITEM	UNIT	QTY
550	TRENCH EXCAVATION PROTECTION	L.F.	225
818	12" PVC WATER MAIN	L.F.	170
826	VALVE BOX ADJUSTMENT	EA	3
833.1	EXISTING METER AND METER BOX RELOCATION	EA	1
836	PIPE FITTINGS, ALL SIZES AND TYPES	TON	1
840	12" WATER TIE-INS	EA	2
841	HYDROSTATIC TESTING	EA	1
844	2" BLOWOFF, TEMPORARY	EA	1
846	1" AIR RELEASE ASSEMBLIES	EA	1
856.2	12" CARRIER PIPE (PVC)	LF	55
856.3	CASING OR LINER 24" (OPEN CUT)	LF	55
858	CONCRETE ENCASUREMENT	CY	2

LEGEND

- ⊕ WATER OR GAS VALVE
- ⊕ FIRE HYDRANT
- ⊕ OH ELEC W/ POLE
- ⊕ SANITARY SEWER/MANHOLE
- PROPERTY LINE
- GUY WIRE
- SIGN
- ⊗ FOUND IRON PIN
- ⊕ WATER METER
- ⊕ TREE
- ⊕ ADDRESS
- ↔ LANE DIRECTION ARROWS
- ▨ MILL AND OVERLAY
- ▨ STREET RECONSTRUCTION

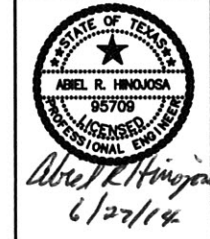
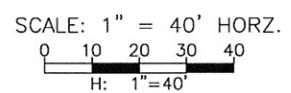


AT&T NOTE
NOTE: "THE EXISTENCE AND LOCATION OF UNDERGROUND CABLE INDICATED ON THE PLANS ARE TAKEN FROM THE BEST RECORDS AVAILABLE AND ARE NOT GUARANTEED TO BE ACCURATE. CONTRACTOR TO CONTACT THE TEXAS STATE WIDE ONE CALL LOCATOR NUMBER 1-800-344-8377. 48 HOURS PRIOR TO PLANT DURING CONSTRUCTION."

CPS NOTE
CALL THE TEXAS STATE WIDE ONE CALL LOCATOR NUMBER 1-800-344-8377, 48 HOURS BEFORE BEGINNING ANY EXCAVATION. DUE TO FEDERAL REGULATIONS TITLE 49, PART 192-181, CPS MUST MAINTAIN ACCESS TO GAS VALVES AT ALL TIMES. THE CONTRACTOR MUST PROTECT AND WORK AROUND ANY GAS VALVES THAT ARE IN THE PROJECT AREA. THE CONTRACTOR WILL BE RESPONSIBLE FOR PROTECTING CPS OVERHEAD AND

TRENCH EXCAVATION SAFETY PROTECTION
CONTRACTOR AND/OR CONTRACTOR'S INDEPENDENTLY RETAINED EMPLOYEE OR STRUCTURAL DESIGN/GEOTECHNICAL/ SAFETY/EQUIPMENT CONSULTANT, IF ANY, SHALL REVIEW THESE PLANS AND AVAILABLE GEOTECHNICAL INFORMATION AND THE ANTICIPATED INSTALLATION SITE(S) WITHIN THE PROJECT WORK AREA IN ORDER TO IMPLEMENT CONTRACTOR'S IN THE CONTRACT DOCUMENTS. THE CONTRACTOR'S IMPLEMENTATION OF THESE SYSTEMS, PROGRAMS AND/OR PROCEDURES SHALL PROVIDE FOR ADEQUATE TRENCH EXCAVATION SAFETY PROTECTION THAT COMPLIES WITH, AS A MINIMUM, OSHA STANDARDS FOR TRENCH EXCAVATIONS, SPECIFICALLY, CONTRACTOR AND/OR CONTRACTOR'S INDEPENDENTLY RETAINED EMPLOYEE OF SAFETY CONSULTANT SHALL IMPLEMENT A TRENCH SAFETY PROGRAM IN ACCORDANCE WITH OSHA STANDARDS GOVERNING THE PRESENCE AND ACTIVITIES OF INDIVIDUALS WORKING IN AND AROUND TRENCH EXCAVATION.

- GENERAL NOTES:**
- 1.) THE CONTRACTOR SHALL BE RESPONSIBLE FOR RESTORING TO ITS ORIGINAL, OR BETTER, CONDITION ANY DAMAGE DONE TO EXISTING CURBS, SIDEWALKS, OR DRIVEWAYS.
 - 2.) CONTRACTOR SHALL CHLORINATE NEW WATER MAINS. HTH CAN BE USED FOR LESS THAN 800' OF NEW MAIN.
 - 3.) THE NEW MAIN SHALL BE INSTALLED TESTED AND MADE READY FOR SERVICE PRIOR TO TIE IN.
 - 4.) THE CONTRACTOR WILL BE RESPONSIBLE FOR PROTECTING CPS OVERHEAD AND UNDERGROUND ELECTRIC FACILITIES IF ADJACENT TO WORK AREA.
 - 5.) CONTRACTOR IS RESPONSIBLE FOR CONTACTING THE TEXAS STATE WIDE ONE CALL LOCATOR 48 HRS PRIOR TO EXCAVATION.
 - 6.) THE CONTRACTOR NEEDS TO VERIFY THE DEPTH OF THE EXISTING 12" WATER MAIN PRIOR TO THE INSTALLATION OF PROPOSED STORM SEWER (SEE CLOUD ABOVE).



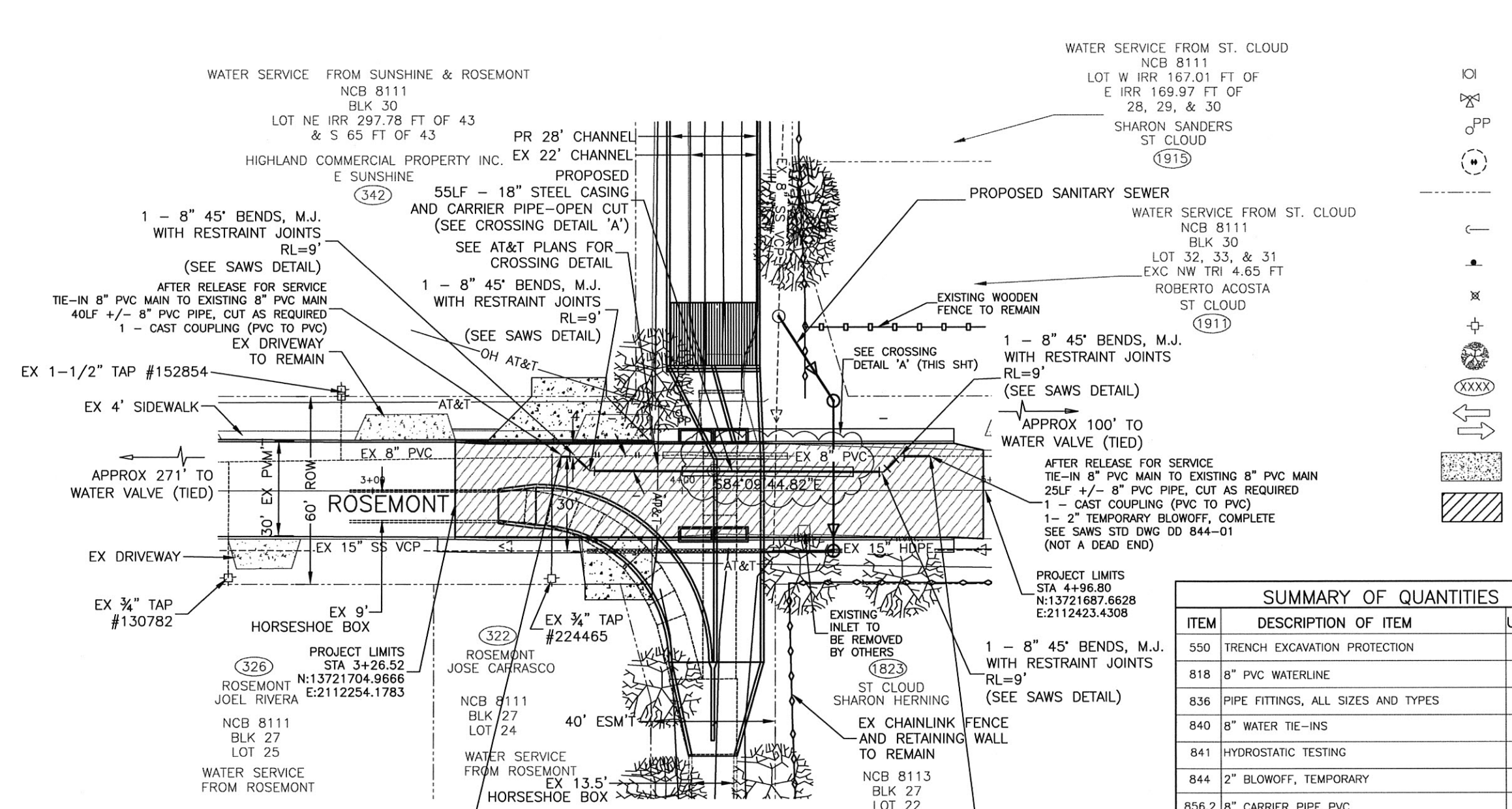
LEGEND

- PROP. WATER MAIN
- EXIST. WATER MAIN
- GAS MAIN
- SANITARY SEWER
- STORM SEWER
- UTILITY POLE LINE
- ELECTRIC CABLE
- TELEPHONE CABLE
- DUAL BRANCH SERV.
- NEW UNMETERED SERVICE:
- 3/4" SINGLE
- 1" DUAL
- SERVICE RECONNECT:
- 3/4"
- 1" OR LARGER
- SERVICE RELAY:
- 3/4"
- 1" OR LARGER
- SERVICE RELOCATE:
- 3/4"
- 1" OR LARGER
- RELOCATE METER
- NEW SERVICE:
- 3/4"
- 1" OR LARGER

No.	Revision	Drawn	Approved	Date
REVISIONS				
SUNSHINE WATER PLAN				
DEVELOPER:		SAN ANTONIO WATER SYSTEM		
CONT.		BUDGET PROJ.		
SUBMITTED		_____		
APPROVED		_____		
MAP No.		_____		
SECT. No.		_____		
DR. ARH	CK. RJA	JOB No. 12-5093		SHEET 4 OF 6

SA DGI INC
San Antonio Design Group Inc.
CONSULTING ENGINEERS
12719 SPECTRUM DR, SUITE 100, SAN ANTONIO, TEXAS, 78213
PH: (210) 342-6700 FAX: (210) 342-6701 WWW.SADESIGNGROUP.COM

THIS DOCUMENT HAS BEEN PRODUCED FROM MATERIAL THAT WAS STORED AND/OR TRANSMITTED ELECTRONICALLY AND MAY HAVE BEEN INADVERTENTLY ALTERED. RELY ONLY ON FINAL HARD COPY MATERIALS BEARING THE CONSULTANT'S ORIGINAL SIGNATURE AND SEAL.



LEGEND

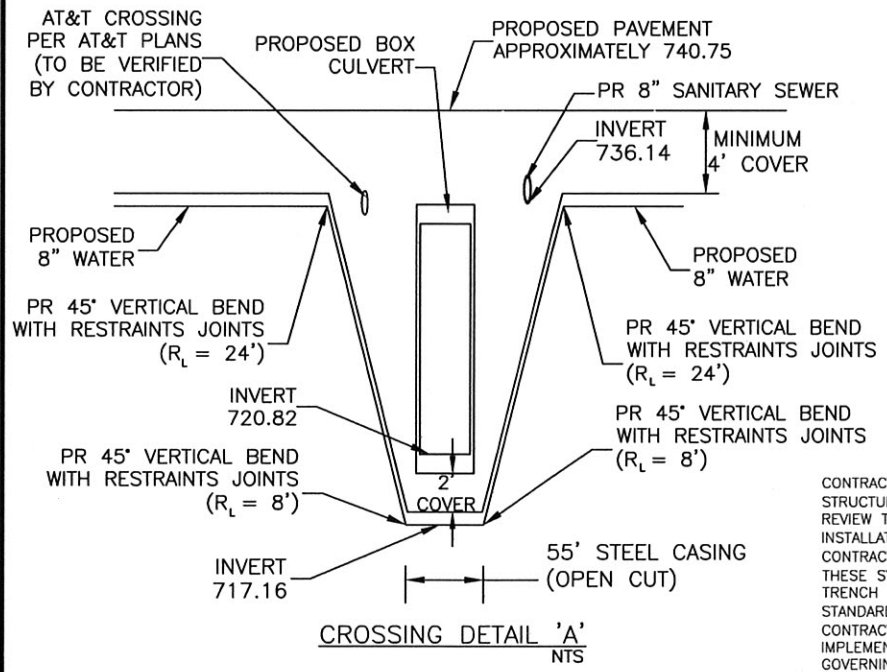
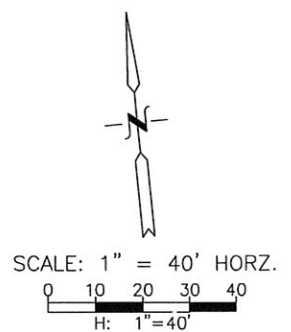
EXISTING

- IOI WATER OR GAS VALVE
- ⊗ FIRE HYDRANT
- PP OH ELEC W/ POLE
- ⊙ SANITARY SEWER/MANHOLE
- PROPERTY LINE
- ← GUY WIRE
- SIGN
- ⊗ FOUND IRON PIN
- ⊕ WATER METER
- ⊙ TREE
- XXXX ADDRESS
- ↔ LANE DIRECTION ARROWS
- ▨ MILL AND OVERLAY
- ▨ STREET RECONSTRUCTION

SUMMARY OF QUANTITIES

ITEM	DESCRIPTION OF ITEM	UNIT	QTY
550	TRENCH EXCAVATION PROTECTION	L.F.	120
818	8" PVC WATERLINE	L.F.	65
836	PIPE FITTINGS, ALL SIZES AND TYPES	TON	0.5
840	8" WATER TIE-INS	EA	2
841	HYDROSTATIC TESTING	EA	1
844	2" BLOWOFF, TEMPORARY	EA	1
856.2	8" CARRIER PIPE PVC	LF	55
856.3	CASING & LINER 18" (INSTALLED BY OPEN-CUT)	LF	55

NOT TO SCALE

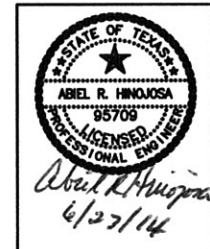


REMOVE EXISTING 8" PVC MAIN AND REMOVE EXISTING CASING AT NO SEPARATE PAY ITEM. CONTRACTOR TO CHLORINATE WITH HTH.

AT&T NOTE
NOTE: "THE EXISTENCE AND LOCATION OF UNDERGROUND CABLE INDICATED ON THE PLANS ARE TAKEN FROM THE BEST RECORDS AVAILABLE AND ARE NOT GUARANTEED TO BE ACCURATE. CONTRACTOR TO CONTACT THE TEXAS STATE WIDE ONE CALL LOCATOR NUMBER 1-800-344-8377. 48 HOURS PRIOR TO PLANT DURING CONSTRUCTION."

- GENERAL NOTES:**
- 1.) THE CONTRACTOR SHALL BE RESPONSIBLE FOR RESTORING TO ITS ORIGINAL, OR BETTER, CONDITION ANY DAMAGE DONE TO EXISTING CURBS, SIDEWALKS, OR DRIVEWAYS.
 - 2.) CONTRACTOR SHALL CHLORINATE NEW WATER MAINS. HTH CAN BE USED FOR LESS THAN 800' OF NEW MAIN.
 - 3.) THE NEW MAIN SHALL BE INSTALLED TESTED AND MADE READY FOR SERVICE PRIOR TO TIE IN.
 - 4.) THE CONTRACTOR WILL BE RESPONSIBLE FOR PROTECTING CPS OVERHEAD AND UNDERGROUND ELECTRIC FACILITIES IF ADJACENT TO WORK AREA.
 - 5.) CONTRACTOR IS RESPONSIBLE FOR CONTACTING THE TEXAS STATE WIDE ONE CALL LOCATOR 48 HRS PRIOR TO EXCAVATION.

TRENCH EXCAVATION SAFETY PROTECTION
CONTRACTOR AND/OR CONTRACTOR'S INDEPENDENTLY RETAINED EMPLOYEE OR STRUCTURAL DESIGN/GEOTECHNICAL/ SAFETY/EQUIPMENT CONSULTANT, IF ANY, SHALL REVIEW THESE PLANS AND AVAILABLE GEOTECHNICAL INFORMATION AND THE ANTICIPATED INSTALLATION SITE(S) WITHIN THE PROJECT WORK AREA IN ORDER TO IMPLEMENT CONTRACTOR'S IN THE CONTRACT DOCUMENTS. THE CONTRACTOR'S IMPLEMENTATION OF THESE SYSTEMS, PROGRAMS AND/OR PROCEDURES SHALL PROVIDE FOR ADEQUATE TRENCH EXCAVATION SAFETY PROTECTION THAT COMPLIES WITH, AS A MINIMUM, OSHA STANDARDS FOR TRENCH EXCAVATIONS, SPECIFICALLY, CONTRACTOR AND/OR CONTRACTOR'S INDEPENDENTLY RETAINED EMPLOYEE OF SAFETY CONSULTANT SHALL IMPLEMENT A TRENCH SAFETY PROGRAM IN ACCORDANCE WITH OSHA STANDARDS GOVERNING THE PRESENCE AND ACTIVITIES OF INDIVIDUALS WORKING IN AND AROUND TRENCH EXCAVATION.



LEGEND

- PROP. WATER MAIN
- EXIST. WATER MAIN
- GAS MAIN
- SANITARY SEWER
- STORM SEWER
- UTILITY POLE LINE
- ELECTRIC CABLE
- TELEPHONE CABLE
- DUAL BRANCH SERV.
- NEW UNMETERED SERVICE:
- 3/4" SINGLE
- 1" DUAL
- SERVICE RECONNECT:
- 3/4"
- 1" OR LARGER
- SERVICE RELAY:
- 3/4"
- 1" OR LARGER
- SERVICE RELOCATE:
- 3/4"
- 1" OR LARGER
- RELOCATE METER
- NEW SERVICE:
- 3/4"
- 1" OR LARGER

SA San Antonio Design Group Inc.
CONSULTING ENGINEERS
12719 SPECTRUM DR, SUITE 100, SAN ANTONIO, TEXAS, 78213
PH: (210) 342-6700 FAX: (210) 342-6701 WWW.SADESIGNGROUP.COM

No.	Revision	Drawn	Approved	Date

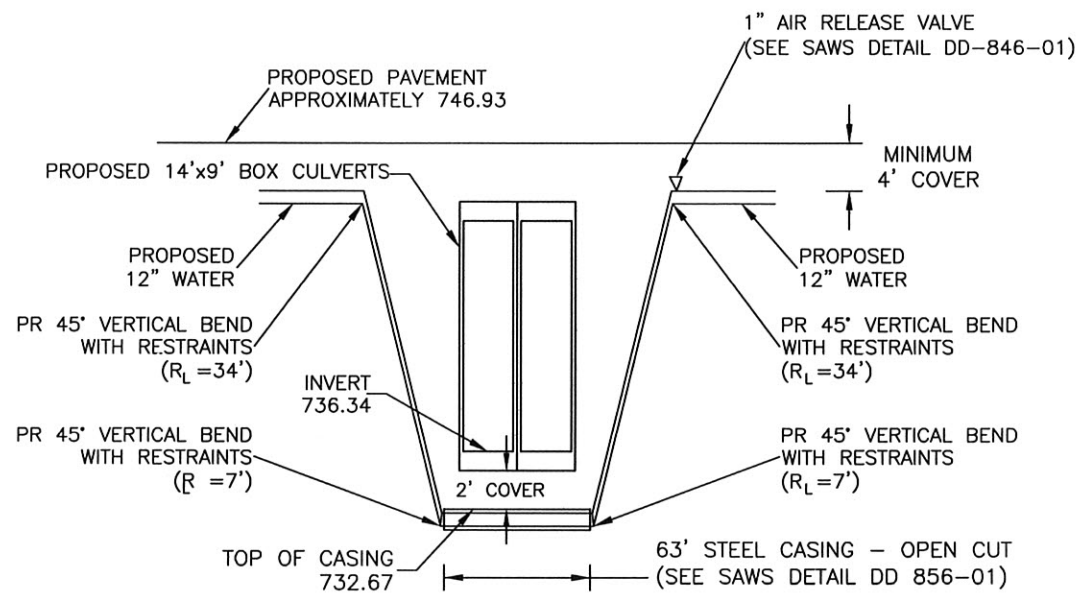
ROSEMONT WATER PLAN

DEVELOPER: SAN ANTONIO WATER SYSTEM
CONT. BUDGET PROJ.

SUBMITTED _____
APPROVED _____

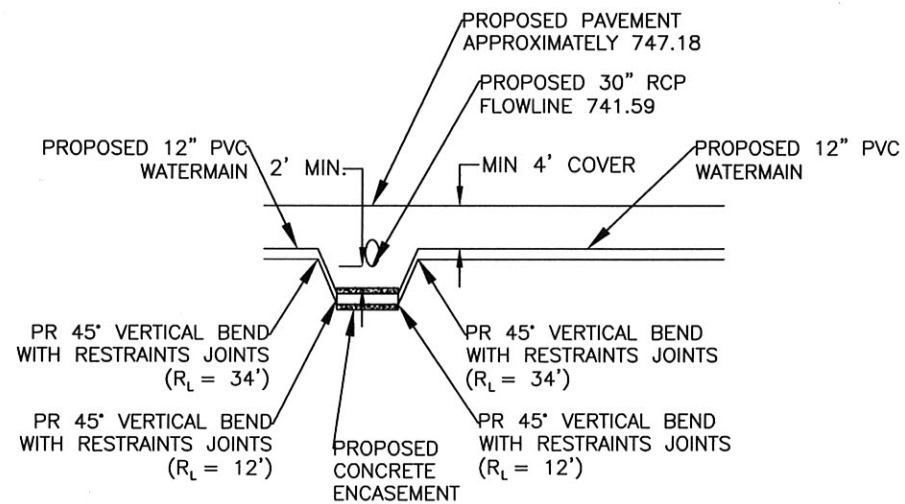
MAP No. _____ SHEET
SECT. No. _____
DR. ARH CK. RJA JOB No. 12-5093 5 OF 6

THIS DOCUMENT HAS BEEN PRODUCED FROM MATERIAL THAT WAS STORED AND/OR TRANSMITTED ELECTRONICALLY AND MAY HAVE BEEN INADEQUATELY ALIGNED. RELY ONLY ON FINAL HARD COPY MATERIALS BEARING THE CONSULTANT'S ORIGINAL SIGNATURE AND SEAL.



CROSSING DETAIL 'B'

NTS



12" WATERMAIN CROSSING RCP STORM SEWER DETAIL

NTS

NOT TO SCALE

SA DG INC San Antonio Design Group Inc.
 CONSULTING ENGINEERS
 12719 SPECTRUM DR., SUITE 100, SAN ANTONIO, TEXAS, 78213
 PH: (210) 342-6700 FAX: (210) 342-6701 WWW.SADESIGNGROUP.COM

LEGEND

PROP. WATER MAIN	—●—
EXIST. WATER MAIN	—○—
GAS MAIN	—2"—
SANITARY SEWER	—6"SA—
STORM SEWER	—24"ST—
UTILITY POLE LINE	—○—
ELECTRIC CABLE	—E—
TELEPHONE CABLE	—T—
DUAL BRANCH SERV.	—
NEW UNMETERED SERVICE:	
3/4" SINGLE	—
1" DUAL	—
SERVICE RECONNECT:	—
3/4"	—
1" OR LARGER	—
SERVICE RELAY:	—
3/4"	—
1" OR LARGER	—
SERVICE RELOCATE:	—
3/4"	—
1" OR LARGER	—
RELOCATE METER	▷
NEW SERVICE:	
3/4"	—
1" OR LARGER	—

No.	Revision	Drawn	Approved	Date

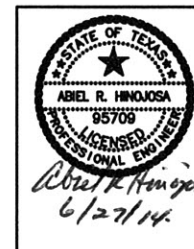
REVISIONS

MISCELLANEOUS WATER DETAILS

DEVELOPER: SAN ANTONIO WATER SYSTEM
 CONT. BUDGET PROJ.

SUBMITTED _____
 APPROVED _____

MAP No. _____ SHEET _____
 SECT. No. _____
 DR. ARH CK. RJA JOB No. 12-5093 6 OF 6



DATE: Jun 27, 2014, 8:14AM USER: ab. Anthony FILE: R:\PROJECTS\12114\12114.dwg (Resized) (Dwg) User: ab. #2-14.dwg